



*Let's move the medium!*

**butterfly valves**



## operating options

### MANUAL

- bare shaft
- standard lever
- short lever
- adjustable lever
- lockable lever
- fail safe lever
- gearbox
- lockable gearbox
- chainwheel

### PNEUMATIC

- rack & pinion
- scotch & yoke
- single acting
- double acting

### ELECTRIC

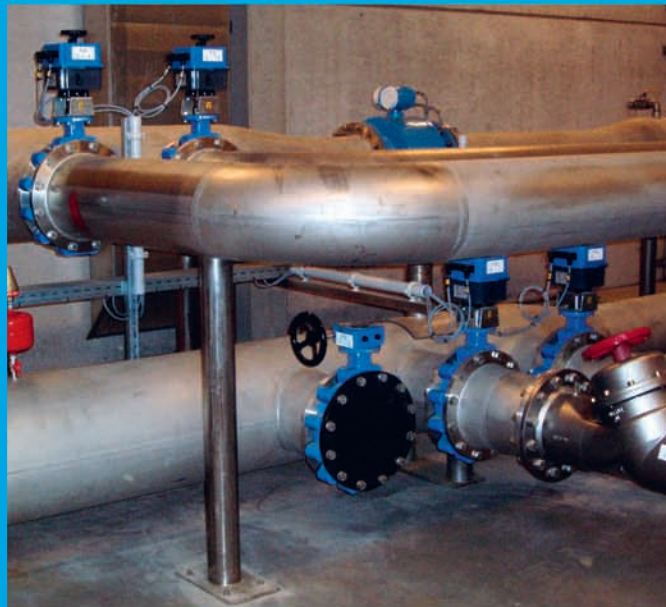
- all tensions
- all protection classes

### HYDRAULIC

- all oil pressures

### ACCESSORIES

- stem extensions
- visual indicators
- solenoid valves
- limit switches
- positioners
- manual override
- on request...



*Let's move the medium!*

## BV 10

- wafer type butterfly valve designed according EN 593
- flange connections according EN 1092-2 - PN6/10/16, ASME/ANSI B16.5 class 150, ASME/ANSI B16.47 class 150 serie A
- face to face dimension according EN 558-1 series 20, ISO 5752 series 20, DIN 3202 K1, API 609 cat.A, BS 5155 table 6, MSS SP-67 table 3
- backup seat or soft seat execution
- available in various body, disc and seat material

**SIZE: DN25 - DN1600 / 1" - 64" (\*)**

(\*) from DN1050 / 42" - U-section design with holes drilled through



## BV 11

- U-section wafer type butterfly valve designed according EN 593
- flange connections according EN 1092-2 - PN10/16, ASME/ANSI B16.5 class 150, ASME/ANSI B16.47 class 150 serie A
- face to face dimension according EN 558-1 series 20, ISO 5752 series 20, DIN 3202 K1, API 609 cat.A, BS 5155 table 6, MSS SP-67 table 3
- backup seat execution
- available in various body, disc and seat material

**SIZE: DN350 - DN1200 / 14" - 48"**



## BV 12

- lug type butterfly valve designed according EN 593
- flange connections according EN 1092-2 - PN6/10/16, ASME/ANSI B16.5 class 150, ASME/ANSI B16.47 class 150 serie A
- face to face dimension according EN 558-1 series 20, ISO 5752 series 20, DIN 3202 K1, API 609 cat.A, BS 5155 table 6, MSS SP-67 table 3
- backup seat or soft seat execution
- available in various body, disc and seat material

**SIZE: DN40 - 1200 / 1 1/2" - 48" (\*)**

(\*) from DN700 / 28" - U-section design with internally threaded holes

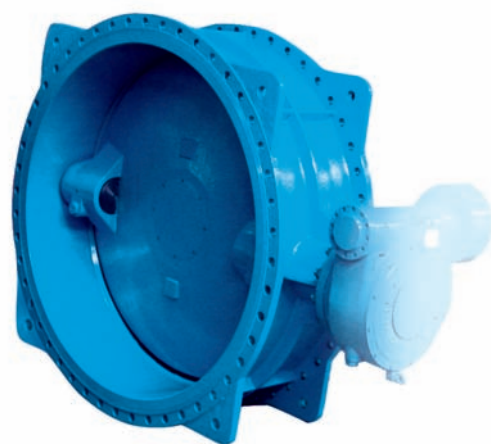


## BV 13

- double flanged eccentric butterfly valve designed according EN 593
- flange connections according EN 1092-2 - PN10/16
- face to face dimension according EN 558-1 series 13 and 14, ISO 5752 series 13 and 14, DIN 3202 F4 and F16, BS 5155 table 6
- resilient disc seal execution
- available in various body, disc and seat material

**SIZE: DN200 – DN2800 / 8" – 112" (\*)**

(\*) on request in single or double offset



## BV 14

- double flanged concentric butterfly valve designed according EN 593
- flange connections according EN 1092-2 - PN10/16, ASME/ANSI B16.5 class 150, ASME/ANSI B16.47 class 150 serie A
- face to face dimension according EN 558-1 series 13, ISO 5752 series 13, DIN 3202 F16, API 609 cat.B, BS 5155 table 6
- vulcanised seat on the body
- available in various body, disc and seat material

**SIZE: DN50 - DN2000 / 2" - 80"**



  
**belven**<sup>®</sup>

- ADR
- ANSI
- TA-LUFT
- PED

- ISO
- 3.1
- WRAS
- GOST

- ROSTECHNADZOR
- DVGW
- KTW

## BV10-TFM

- wafer type, two-piece, TFM-lined butterfly valve designed according EN 593
- flange connections according EN 1092-2 - PN10/16, ASME ANSI B16.5 class 150
- face to face dimension according EN 558-1 series 20, ISO 5752 series 20, DIN 3202 K1, API 609 cat.A, BS 5155 table 6, MSS SP-67 table 3
- TFM backup seat for high performance demands
- available in various body, stem, disc and seat material

**SIZE: DN25 - DN600 / 1" - 24"**



## BV12-TFM

- lug type, two-piece, TFM-lined butterfly valve designed according EN 593
- flange connections according EN 1092-2 - PN10/16, ASME ANSI B16.5 class 150
- face to face dimension according EN 558-1 series 20, ISO 5752 series 20, DIN 3202 K1, API 609 cat.A, BS 5155 table 6, MSS SP-67 table 3
- TFM backup seat for high performance demands
- available in various body, stem, disc and seat material

**SIZE: DN40 - DN600 / 1 1/2" - 24"**





Industriepark Mechelen Noord 1  
Blokhuistraat 24 | 2800 Mechelen | Belgium  
tel. +32 [0]15 29 40 70  
fax +32 [0]15 20 14 13  
info@belven.com  
www.belven.com



In 2008, after 28 years of experience in production of quarter turn valves for industrial use, **BELGIUM VENTIEL NV** becomes **BELVEN® NV**.

#### Production

Belven® produces and sells industrial split-body ball valves, butterfly valves, gate valves, non-return valves and strainers. Belven® has its production workshop with up-to-date machinery and test equipment. Products are available in cast and ductile iron, steel and in stainless steel. Focus is on the existing product range, and this range can only grow by complementary products and services within the defined scope.

#### Environment and durability

Belven® is focused on quality and has been ISO9001-certified since 1996 and produces accordingly 97/23/EC since 2003. Belven® currently invests in the future and focuses on development and people awareness by investing in new office buildings and by growth in floor capacity. Environment and a supporting infrastructure are key factors in the future development.

#### Mission

Belven® is a family company, specialised in the production and sales of quarterturn valves. Belven® wants to put its brand name on the globe by means of geographical expansion.

Belven® focuses on active partnership with customers and suppliers and wants to help realise the success of her partners by continuous dialogue and technological innovation.

Belven® wants to develop a climate of active partnership with its employees, in which everyone can develop and support in an enthusiastic way to realise our mission.

#### Strategy

Belven® has an offensive eye on innovation, quality of production and sales. Focused markets are being approached via two sales channels: International Distribution Department (Distribution) and Business Development Department (Project).

As a growing marketing-focused company, Belven® aims for maintenance and expansion of the existing sales web. Combined with geographical growth through the above mentioned departments, Belven® strengthens its basis and builds up on a durable way and with respect for its environment towards a strong future.

Belven® is a privately owned family company which is financially fully self supporting.

Partnerships with cooperators, customers and suppliers are part of the long term vision and result in a win/win situation for all parties.

*Being a family company, Belven® represents a number of important family values which are being carried out both internally to and by the employees and externally towards customers and agents. Stability, flexibility, trust, loyalty, respect, positivism, keeping an eye on the future. These values are guidelines for the complete conduct and organisation of Belven® and are handled with care as in each family.*